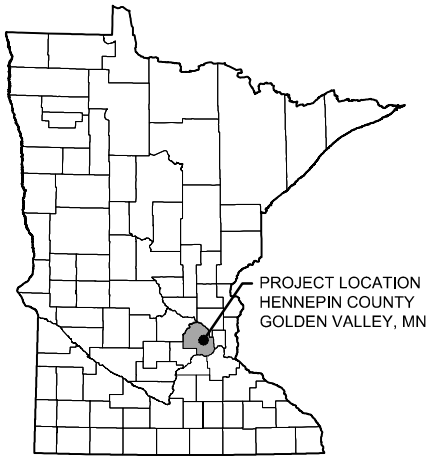


BASSETT CREEK MAIN STEM RESTORATION - PHASE 2

BASSETT CREEK WATERSHED MANAGEMENT COMMISSION



MINNESOTA COUNTY MAP

CONTACTS:

ENGINEER CONTACT:
Jessica Olson
Barr Engineering Co.
325 South Lake Avenue
Duluth, MN 55802
218-259-7118
jolson@barr.com

OWNER'S REPRESENTATIVE CONTACT:
Laura Jester
Bassett Creek Watershed Management Commission
P.O. Box 270825
Golden Valley, MN 55427
952-270-1990
laura.jester@keystonewaters.com

PROPERTY OWNER'S REPRESENTATIVE:
Drew Chirpich
City of Golden Valley
7800 Golden Valley Road
Golden Valley, MN 55427
763-593-8044
dchirpich@goldenvalleymn.gov

GENERAL NOTES:

1. CONTOUR DATA SHOWN IN THIS PLAN SET IS BASED ON SURVEY PERFORMED BY BARR ENGINEERING IN MARCH 2025 (LIDAR DRONE) AND APRIL 2025 (SURVEY-GRADE GPS).
2. IMAGERY: NEARMAP PICTOMETRY LTD, AUGUST 2024.
3. HORIZONTAL DATUM AND COORDINATE SYSTEM: HENNEPIN COUNTY COORDINATES, NAD83, US SURVEY FEET.
4. VERTICAL DATUM: NAVD88.

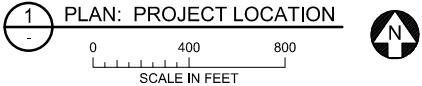


GOPHER STATE ONE CALL:
CALL BEFORE YOU DIG.
1-800-252-1166



INDEX OF SHEETS

- G-01 TITLE SHEET, PROJECT LOCATION AND SHEET INDEX
G-02 ESTIMATED QUANTITIES, GENERAL NOTES, AND LEGEND
- R-01 VEGETATION RESTORATION PLAN (STA. 0+00 - 9+00)
R-02 VEGETATION RESTORATION PLAN (STA. 9+00 - 18+00)
R-03 VEGETATION RESTORATION PLAN (STA. 18+00 - 27+00)
R-04 VEGETATION RESTORATION PLAN (STA. 27+00 - 36+00)
R-05 VEGETATION RESTORATION PLAN (STA. 36+00 - 45+00)
R-06 VEGETATION RESTORATION PLAN (STA. 45+00 - 54+00)
R-07 VEGETATION RESTORATION PLAN (STA. 54+00 - 63+00)
R-08 VEGETATION RESTORATION PLAN (STA. 63+00 - 72+00)
R-09 VEGETATION RESTORATION DETAILS



ORIGINAL DRAWING SIZE: ANSI FULL BLEED B (11.00 X 17.00 INCHES) PLOT SCALE: 1/2" = 100' DATE: 6/19/2025 4:35 PM
CADD USER: DILLON R. MARTIN FILE: MDESIGN23272114.0023272114_P02_G01.DWG

I HEREBY CERTIFY THAT THIS PLAN, SPECIFICATION, OR REPORT WAS PREPARED BY ME OR UNDER MY DIRECT SUPERVISION AND THAT I AM A DULY LICENSED PROFESSIONAL ENGINEER UNDER THE LAWS OF THE STATE OF MINNESOTA.	-	-	-	-	-	-
	-	-	-	-	-	-
	-	-	-	-	-	-
	-	-	-	-	-	-
	-	-	-	-	-	-
	-	-	-	-	-	-
	-	-	-	-	-	-
PRINTED NAME _____	A	EPF	JCO	JCO	06/20/2025	ISSUED FOR REVIEW
SIGNATURE _____	#	BY	CHK	APP	DATE	RELEASE/REVISION DESCRIPTION
DATE _____ LICENSE # _____						



BARR ENGINEERING CO.
4300 MARKETPOINTE DRIVE
SUITE 200
MINNEAPOLIS, MN 55435

PH: 1-800-632-2277
WWW.BARR.COM
MINNESOTA ENGINEERING FIRM
NUMBER 10104111545

BASSETT CREEK WATERSHED MANAGEMENT COMMISSION
GOLDEN VALLEY, MINNESOTA

BASSETT CREEK MAIN STEM RESTORATION - PHASE 2 GOLDEN VALLEY, MINNESOTA	
TITLE SHEET, PROJECT LOCATION, AND SHEET INDEX	

BARR PROJECT # 23272114.00
DWG # G-01
REV # A

50% DESIGN
ISSUED FOR REVIEW
NOT FOR CONSTRUCTION

GENERAL NOTES:

TOPO AND CONTROL GROUND SURVEY CONDUCTED BY BARR ENGINEERING IN MARCH 2025 IN HENNEPIN COUNTY FEET PROJECTION.

IMAGERY: NEARMAP PICTOMETRY LTD, 2024.

1. CONTRACTOR IS RESPONSIBLE TO LOCATE AND FIELD VERIFY ALL EXISTING UTILITIES PRIOR TO WORK.
2. MINIMIZE DISTURBANCE OF EXISTING VEGETATION, WITH THE EXCEPTION OF AREAS OF VEGETATION REMOVAL AS INDICATED ON THE DRAWINGS.
3. DO NOT DISTURB TREES AND SHRUBS NOT MARKED FOR REMOVAL, INCLUDING MINIMIZING DISTURBANCE OF SOILS WITHIN THE TREE DRIPLINE, DO NOT STOCKPILE MATERIALS OR DRIVE VEHICLES/EQUIPMENT WITHIN TREE DRIPLINE(S) UNLESS APPROVED BY ENGINEER.
4. ALL EXISTING ROADS, PARKING LOTS, TRAILS, FENCES, SIGNS, OR SIMILAR SHALL BE PROTECTED DURING CONSTRUCTION, EXCEPT WHERE SHOWN ON PLANS FOR REMOVAL. CONTRACTOR RESPONSIBLE TO COORDINATE SURVEYS WITH THE CITY AND/OR OWNER TO DOCUMENT PRE-CONSTRUCTION EXISTING CONDITION ISSUES.
5. CONTRACTOR SHALL INSTALL AND MAINTAIN ALL EROSION CONTROL BMPS PRIOR TO COMMENCEMENT OF GRADING FOR EACH LOCATION DURING CONSTRUCTION. EROSION CONTROL PLANS ARE PROVIDED INSIDE THE PROJECT STORMWATER POLLUTION PREVENTION PLAN (SWPPP).
6. ALL GROUND DISTURBANCE GENERATED FROM GRADING ACTIVITIES SHALL BE STABILIZED AND RESTORED WITH TOPSOIL, SEED W/COVER CROP AND EROSION CONTROL BLANKET OR STRAW MULCH.
7. CONTRACTOR TO MAINTAIN EXISTING STREAM BOTTOM WIDTH SO NOT TO DECREASE CREEK CROSS SECTIONAL AREA DURING RIPRAP INSTALLATION.
8. CONSTRUCTION LIMITS AS SHOWN ARE APPROXIMATE FINAL CONSTRUCTION LIMITS TO BE COORDINATED WITH THE OWNER AND/OR ENGINEER AND STAKED IN THE FIELD.
9. STREAM FEATURE LOCATIONS MAY BE FIELD FIT AS DIRECTED BY ENGINEER.
10. SWEEP PAVEMENT DAILY, OR AS REQUIRED TO KEEP FROM TRACKING MATERIALS OFFSITE.
11. REPAIR OR REMOVE ITEMS THAT ARE DAMAGED, REPAIR AND REPLACE DAMAGED ITEMS TO A CONDITION AT LEAST EQUAL TO THAT WHICH EXIST PRIOR TO THE START OF WORK.
12. OBTAIN ANY REQUIRED PERMITS, NOT PROVIDED BY THE ENGINEER, BEFORE PERFORMING WORK.

TREE REMOVAL/PROTECTION NOTES:

1. ADDITIONAL TREE REMOVALS MAY BE REQUESTED AND APPROVED AT TIME OF CONSTRUCTION.
2. ASH TREES MUST BE REMOVED BETWEEN OCTOBER 1ST AND APRIL 30TH AND TAKEN TO AN APPROVED SITE FOR DISPOSAL. CONTRACTOR MUST PROVIDE ASSURANCE THAT ASH TREES DO NOT LEAVE QUARANTINED AREA.
3. CONTRACTOR SHALL FOLLOW ALL ROAD RESTRICTION REGULATIONS WHEN REMOVING TREES.
4. LANDSCAPE ARCHITECT SHALL MARK ALL TREES FOR REMOVAL PRIOR TO ANY CONSTRUCTION ACTIVITY. COORDINATE WITH LANDSCAPE ARCHITECT TWO (2) WEEKS PRIOR TO CONSTRUCTION.
5. REMOVE AND DISPOSE OF ALL WOOD AND DEBRIS IN ACCORDANCE WITH ALL LOCAL RULES AND REGULATIONS.
6. CONTRACTOR TO VERIFY AND RECORD QUANTITY OF TREES REMOVED WITH DIAMETER GREATER THAN 6".
7. ALL TREES NOT MARKED FOR REMOVAL SHALL BE AVOIDED AND ANY GRADING OR COMPACTION WITHIN THE DRIPLINE SHALL BE MINIMIZED.
8. CONSTRUCTION MATERIALS, STOCKPILES, EQUIPMENT, AND TEMPORARY FACILITIES SHALL NOT BE STORED OR OPERATED WITHIN THE TREE PROTECTION ZONE (EQUAL TO DRIPLINE).
9. ROOTS OUTSIDE OF THE TREE PROTECTION ZONE EXPOSED OR DAMAGED DURING EXCAVATION OR OTHER CONSTRUCTION ACTIVITY SHALL BE CLEANLY CUT AS DIRECTED BY THE CITY FORESTER.
10. ADDITIONAL TREE PROTECTION MEASURES MAY BE REQUIRED.

EROSION & SEDIMENT CONTROL NOTES:

1. INSTALL PERIMETER EROSION CONTROL AT THE LOCATIONS SHOWN ON THE PLANS PRIOR TO THE COMMENCEMENT OF ANY UPSLOPE LAND DISTURBANCE OR CONSTRUCTION ACTIVITIES.
2. BEFORE BEGINNING CONSTRUCTION, INSTALL A TEMPORARY ROCK CONSTRUCTION ENTRANCE AT EACH POINT WHERE VEHICLES ENTER OR EXIT THE CONSTRUCTION SITE.
3. INSTALL INLET PROTECTION AT ALL PUBLIC AND PRIVATE CATCH BASIN INLETS WHICH RECEIVE RUNOFF FROM THE DISTURBED AREAS. CONTRACTOR SHALL CLEAN, REMOVE SEDIMENT, OR REPLACE STORM DRAIN INLET PROTECTION DEVICES ON A ROUTINE BASIS SUCH THAT THE DEVICES ARE FULLY FUNCTIONAL FOR THE NEXT RAIN EVENT. SEDIMENT DEPOSITED IN AND/OR PLUGGING DRAINAGE SYSTEMS IS THE RESPONSIBILITY OF THE CONTRACTOR. HAY BALES OR FILTER FABRIC WRAPPED GRATES ARE NOT ALLOWED FOR INLET PROTECTION.
4. LOCATE SOIL OR DIRT STOCKPILES NO LESS THAN 25 FEET FROM ANY PUBLIC OR PRIVATE ROADWAY OR DRAINAGE CHANNEL. IF REMAINING FOR MORE THAN SEVEN DAYS, STABILIZE THE STOCKPILES BY MULCHING, VEGETATIVE COVER, TARPS, OR OTHER MEANS. CONTROL EROSION FROM ALL STOCKPILES BY PLACING SILT BARRIERS AROUND THE PILES. TEMPORARY STOCKPILES LOCATED ON PAVED SURFACES MUST BE NO LESS THAN TWO FEET FROM THE DRAINAGE/GUTTER LINE AND SHALL BE COVERED IF LEFT MORE THAN 24 HOURS.
5. NATURAL TOPOGRAPHY AND SOIL CONDITIONS MUST BE PROTECTED, INCLUDING RETENTION ONSITE OF NATIVE TOPSOIL TO THE GREATEST EXTENT POSSIBLE.
6. ADDITIONAL MEASURES, SUCH AS HYDRAULIC MULCHING AND OTHER PRACTICES AS SPECIFIED BY THE COMMISSION MUST BE USED ON SLOPES OF 3:1 (H:V) OR STEEPER TO PROVIDE ADEQUATE STABILIZATION.
7. CONSTRUCTION SITE WASTE SUCH AS DISCARDED BUILDING MATERIALS, CONCRETE TRUCK WASHOUT, CHEMICALS, LITTER AND SANITARY WASTE MUST BE PROPERLY MANAGED.
8. ALL TEMPORARY EROSION AND SEDIMENT CONTROL BMPS MUST BE MAINTAINED UNTIL COMPLETION OF CONSTRUCTION AND VEGETATION IS ESTABLISHED SUFFICIENTLY TO ENSURE STABILITY OF THE SITE, AS DETERMINED BY THE COMMISSION, AND ALL FINAL STABILIZATION REQUIREMENTS ARE ACHIEVED.
9. ALL DISTURBED AREAS MUST BE STABILIZED WITHIN 7 CALENDAR DAYS AFTER LAND-DISTURBING WORK HAS TEMPORARILY OR PERMANENTLY CEASED ON A PROPERTY THAT DRAINS TO AN IMPAIRED WATER, WITHIN 14 DAYS ELSEWHERE.
10. THE PERMITTEE MUST, AT A MINIMUM, INSPECT, MAINTAIN AND REPAIR ALL DISTURBED SURFACES AND ALL EROSION AND SEDIMENT CONTROL FACILITIES AND SOIL STABILIZATION MEASURES EVERY DAY WORK IS PERFORMED ON THE SITE AND AT LEAST WEEKLY UNTIL LAND-DISTURBING ACTIVITY HAS CEASED, THEREAFTER, THE PERMITTEE MUST PERFORM THESE RESPONSIBILITIES AT LEAST WEEKLY UNTIL VEGETATIVE COVER IS ESTABLISHED. THE PERMITTEE WILL MAINTAIN A LOG OF ACTIVITIES UNDER THIS SECTION FOR INSPECTION BY THE DISTRICT ON REQUEST.
11. CHANGES TO APPROVED EROSION CONTROL PLAN MUST BE APPROVED BY THE EROSION CONTROL INSPECTOR PRIOR TO IMPLEMENTATION. CONTRACTOR TO PROVIDE INSTALLATION AND DETAILS FOR ALL PROPOSED ALTERNATE TYPE DEVICES.
12. IF DEWATERING OR PUMPING OF WATER IS NECESSARY, THE CONTRACTOR IS RESPONSIBLE FOR OBTAINING ALL NECESSARY PERMITS AND/OR APPROVALS PRIOR TO DISCHARGE OF ANY WATER FROM THE SITE. IF THE DISCHARGE FROM THE DEWATERING OR PUMPING PROCESS IS TURBID OR CONTAINS SEDIMENT LADEN WATER, IT MUST BE TREATED THROUGH THE USE OF SEDIMENT TRAPS, VEGETATIVE FILTER STRIPS, OR OTHER SEDIMENT REDUCING MEASURES SUCH THAT THE DISCHARGE IS NOT VISIBLY DIFFERENT FROM THE RECEIVING WATER. ADDITIONAL EROSION CONTROL MEASURES MAY BE REQUIRED AT THE DISCHARGE POINT TO PREVENT SCOUR EROSION.
13. ACTIVITIES MUST BE CONDUCTED SO AS TO MINIMIZE THE POTENTIAL TRANSFER OF AQUATIC INVASIVE SPECIES (E.G., ZEBRA MUSSELS, EURASIAN WATERMILFOIL, ETC.) TO THE MAXIMUM EXTENT POSSIBLE. SEE SECTION 4.6 OF THE SWPPP (SHEET G-03) FOR FURTHER DETAIL.
14. WHEREVER CONSTRUCTION ACCESS ROUTE CROSSES EXISTING TRAILS, PROTECT WITH MATTING OR ENGINEER-APPROVED ALTERNATIVE.

STATEMENT OF ESTIMATED QUANTITIES

SEQ TO BE PROVIDED

SEED MIXES

BEE LAWN MIX

TO BE PROVIDED

RIPARIAN EDGE MIX

TO BE PROVIDED

MASTER LEGEND

- 960
- EXISTING 10' CONTOUR
- 962
- EXISTING 2' CONTOUR
- P/L
- EXISTING PROPERTY LINE
- ESMT
- EXISTING EASEMENT
- ST
- EXISTING STORM SEWER
- SAN
- EXISTING SANITARY SEWER
- GAS
- EXISTING GAS LINE
- UT
- EXISTING OVERHEAD ELECTRIC
- W
- EXISTING WATERMAIN
- UGFO
- EXISTING UNDERGROUND FIBER OPTIC
- X
- EXISTING FENCE
- WT
- EXISTING WETLAND DELINEATION
-
- OHWL
-
- 100-YEAR HWL
-
- RESTORATION LIMITS
-
- ENHANCE AND/OR ESTABLISH NATIVE VEGETATION BUFFER
-
- REMOVE INVASIVE SPECIES AND ESTABLISH NATIVE VEGETATION BUFFER
-
- EXISTING LIGHT POLE
-
- EXISTING UTILITY POLE
-
- EXISTING HYDRANT
-
- EXISTING SIGN
-
- EXISTING SANITARY MANHOLE
-
- EXISTING STORM MANHOLE
-
- EXISTING TREE

PHASE 1 PROJECT LEGEND

-
- EXISTING TREE REMOVAL
- 815
- PROPOSED 5' CONTOUR
- 816
- PROPOSED 1' CONTOUR
-
- PROPOSED EASEMENT
- X
- PROPOSED TREE PROTECTION FENCING
- 101
- TREE IDENTIFICATION NUMBER, SEE TABLE FOR TREE SURVEY AND TREE REMOVAL SUMMARY
- >
- PROPOSED STORM SEWER
-
- CONSTRUCTION ACCESS
-
- RIPRAP
-
- TOE WOOD
-
- VRSS
-
- GRADING AREA
-
- GRADING WITH LIVE STAKES/PLANTINGS
-
- ROOT WAD
-
- BOULDER CROSS VANE
-
- J-HOOK BOULDER VANE
-
- COIR LOGS
-
- FASCINES
-
- SILT FENCE
- SL
- SEDIMENT CONTROL LOGS

50% DESIGN
ISSUED FOR REVIEW
NOT FOR CONSTRUCTION

ORIGINAL DRAWING SIZE: ANSI FULL BLEED B (11.00 X 17.00 INCHES) PLOT SCALE: 1:2 PLOT DATE: 7/9/2025 9:27 AM
CADD USER: DILON R. MARTIN FILE MIDSIGN23272114.0023272114_P102.DWG

I HEREBY CERTIFY THAT THIS PLAN, SPECIFICATION, OR REPORT WAS PREPARED BY ME OR UNDER MY DIRECT SUPERVISION AND THAT I AM A DULY LICENSED PROFESSIONAL ENGINEER UNDER THE LAWS OF THE STATE OF MINNESOTA.

PRINTED NAME: _____

SIGNATURE: _____

DATE: _____ LICENSE #: _____

-	-	-	-	-	-
-	-	-	-	-	-
-	-	-	-	-	-
-	-	-	-	-	-
-	-	-	-	-	-
A	EPF	JCO	JCO	06/20/2025	ISSUED FOR REVIEW
#	BY	CHK	APP	DATE	RELEASE/REVISION DESCRIPTION

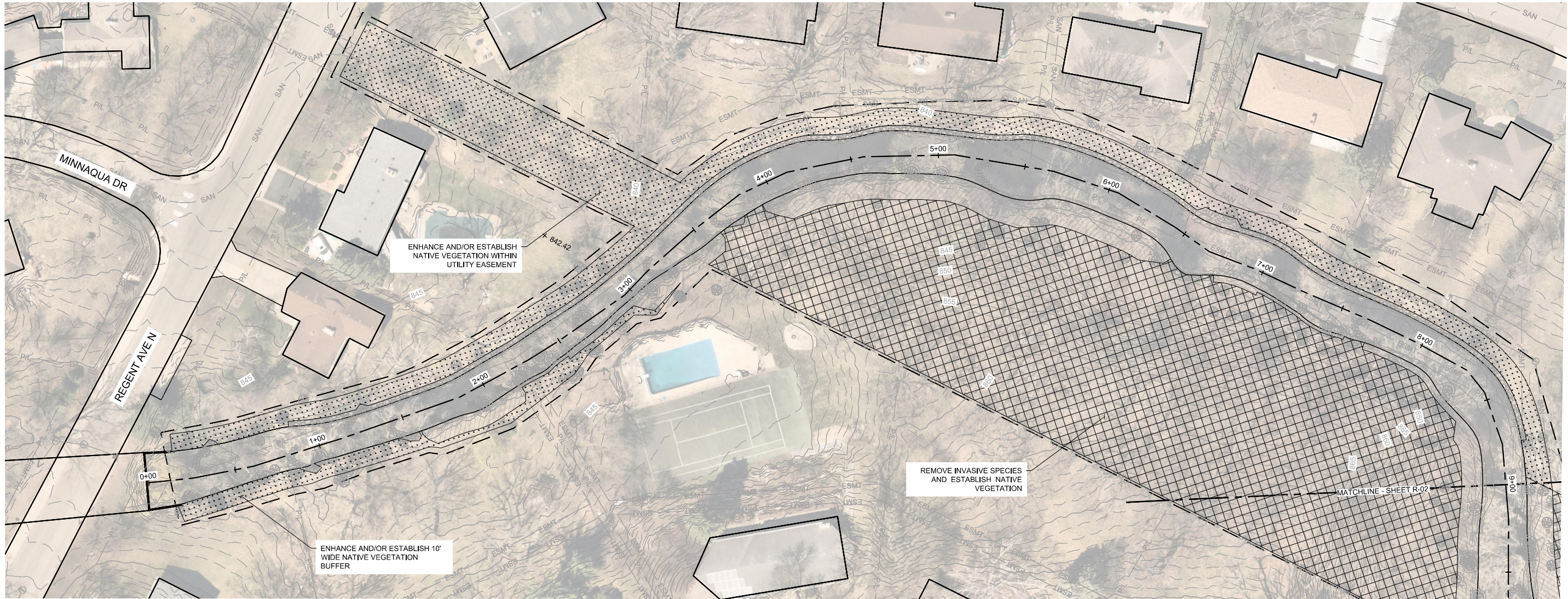
BARR ENGINEERING CO.
4300 MARKETPOINTE DRIVE
SUITE 200
MINNEAPOLIS, MN 55435

PH: 1-800-632-2277
WWW.BARR.COM
MINNESOTA ENGINEERING FIRM
NUMBER 10104111545

BASSETT CREEK WATERSHED MANAGEMENT COMMISSION
GOLDEN VALLEY, MINNESOTA

BASSETT CREEK MAIN STEM RESTORATION - PHASE 2
GOLDEN VALLEY, MINNESOTA
ESTIMATED QUANTITIES, GENERAL NOTES, AND LEGEND

BARR PROJECT #	23272114.00
DWG #	G-02
REV #	A



1 PLAN: BASSETT CREEK VEGETATION RESTORATION (STA. 0+00 TO 9+00)

0 30 60
SCALE IN FEET

50% DESIGN
ISSUED FOR REVIEW
NOT FOR CONSTRUCTION

I HEREBY CERTIFY THAT THIS PLAN, SPECIFICATION, OR REPORT WAS PREPARED BY ME OR UNDER MY DIRECT SUPERVISION AND THAT I AM A DULY LICENSED PROFESSIONAL ENGINEER UNDER THE LAWS OF THE STATE OF MINNESOTA.

PRINTED NAME _____
SIGNATURE _____
DATE _____ LICENSE # _____

-	-	-	-	-	-	
-	-	-	-	-	-	
-	-	-	-	-	-	
-	-	-	-	-	-	
-	-	-	-	-	-	
A	EPF	JCO	JCO	06/20/2025	ISSUED FOR REVIEW	
#	BY	CHK	APP	DATE	RELEASE/REVISION DESCRIPTION	



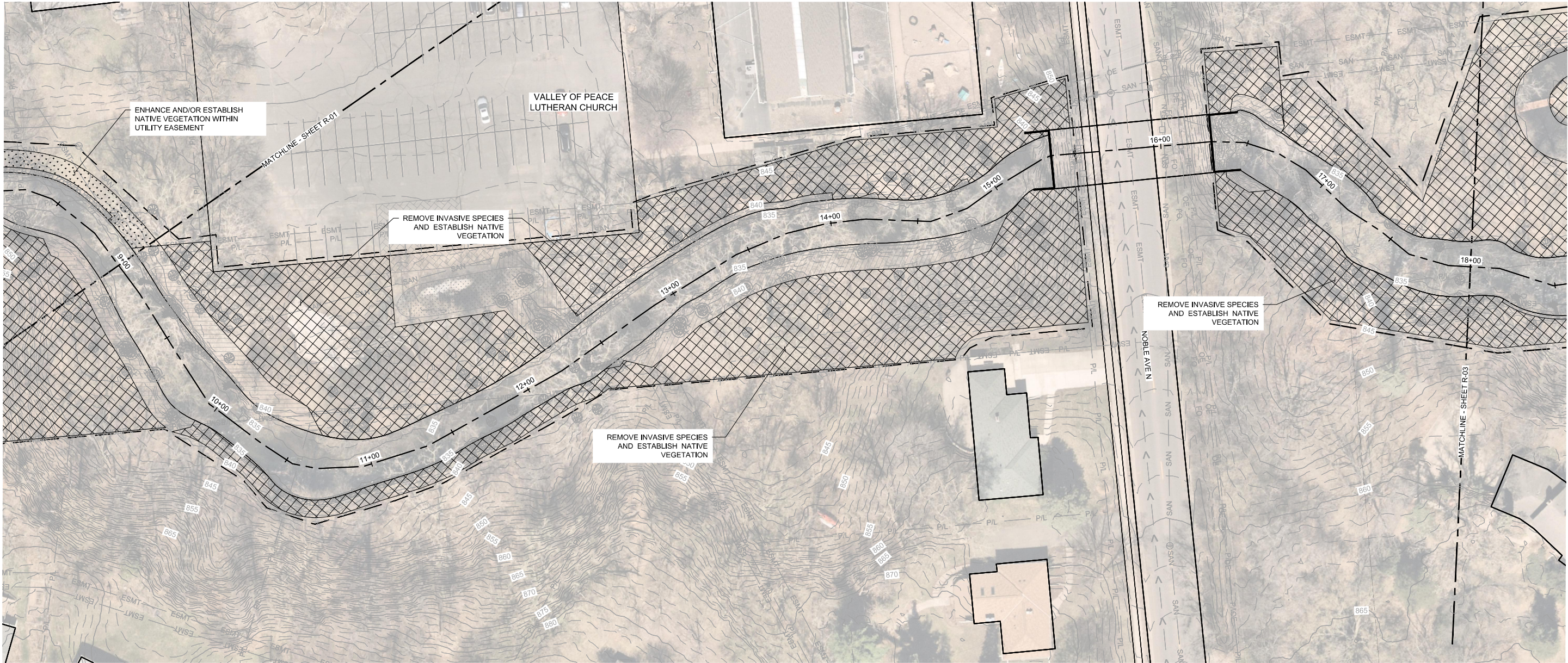
BARR ENGINEERING CO.
4300 MARKETPOINTE DRIVE
SUITE 200
MINNEAPOLIS, MN 55435

PH: 1-800-632-2277
WWW.BARR.COM
MINNESOTA ENGINEERING FIRM
NUMBER 10104111545

BASSETT CREEK WATERSHED MANAGEMENT COMMISSION
GOLDEN VALLEY, MINNESOTA

BASSETT CREEK MAIN STEM RESTORATION - PHASE 2
GOLDEN VALLEY, MINNESOTA
VEGETATION RESTORATION PLAN
(STA. 0+00 TO 9+00)

BARR PROJECT #	23272114.00
DWG #	R-01
REV #	A



50% DESIGN
ISSUED FOR REVIEW
NOT FOR CONSTRUCTION

I HEREBY CERTIFY THAT THIS PLAN, SPECIFICATION, OR REPORT WAS PREPARED BY ME OR UNDER MY DIRECT SUPERVISION AND THAT I AM A DULY LICENSED PROFESSIONAL ENGINEER UNDER THE LAWS OF THE STATE OF MINNESOTA.

PRINTED NAME: _____

SIGNATURE: _____

DATE: _____ LICENSE #: _____

-	-	-	-	-	-	
-	-	-	-	-	-	
-	-	-	-	-	-	
-	-	-	-	-	-	
-	-	-	-	-	-	
A	EPF	JCO	JCO	06/20/2025	ISSUED FOR REVIEW	
#	BY	CHK	APP	DATE	RELEASE/REVISION DESCRIPTION	



BARR

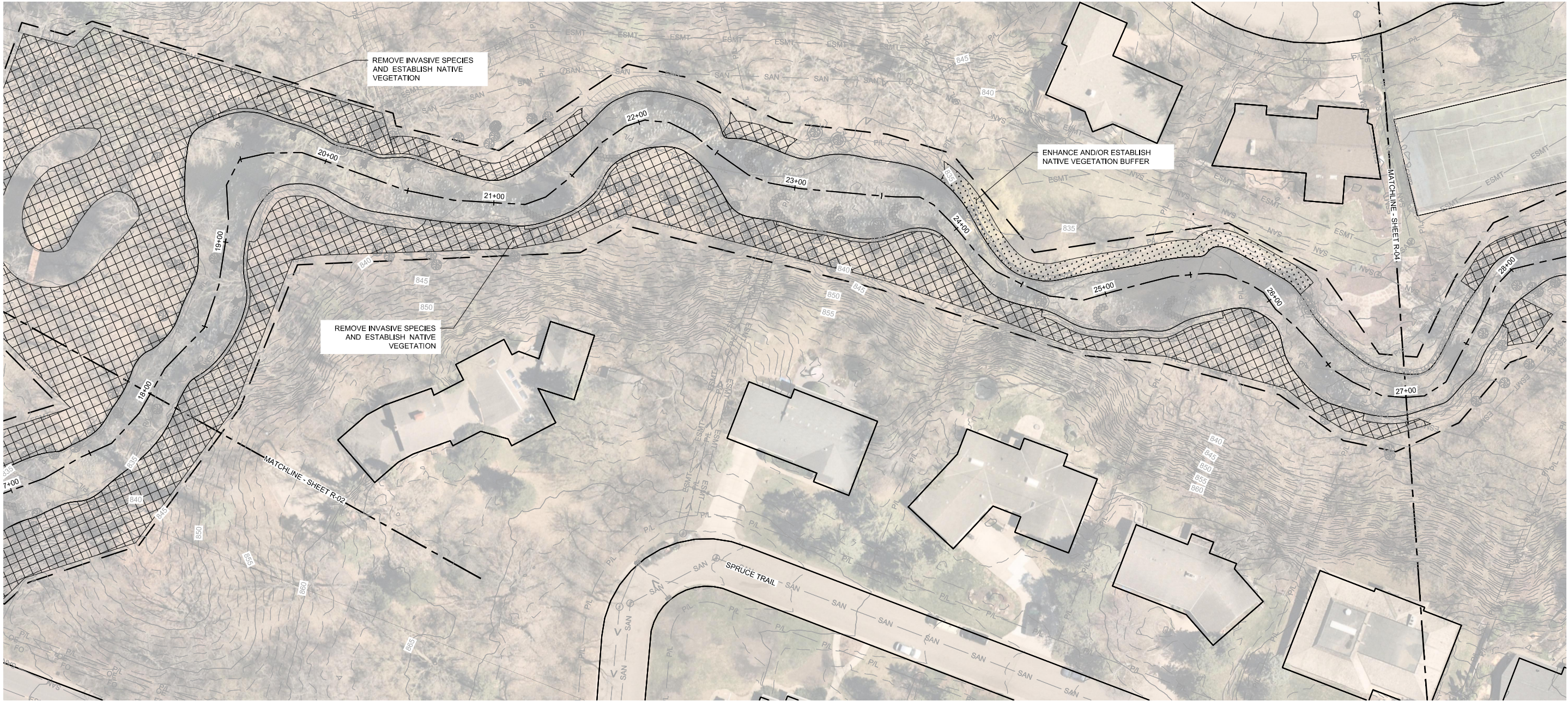
BARR ENGINEERING CO.
4300 MARKETPOINTE DRIVE
SUITE 200
MINNEAPOLIS, MN 55435

PH: 1-800-632-2277
WWW.BARR.COM
MINNESOTA ENGINEERING FIRM
NUMBER 10104111545

BASSETT CREEK WATERSHED MANAGEMENT COMMISSION
GOLDEN VALLEY, MINNESOTA

BASSETT CREEK MAIN STEM RESTORATION - PHASE 2
GOLDEN VALLEY, MINNESOTA
VEGETATION RESTORATION PLAN
(STA. 9+00 TO 18+00)

BARR PROJECT #	23272114.00
DWG #	R-02
REV #	A



50% DESIGN
ISSUED FOR REVIEW
NOT FOR CONSTRUCTION

I HEREBY CERTIFY THAT THIS PLAN, SPECIFICATION, OR REPORT WAS PREPARED BY ME OR UNDER MY DIRECT SUPERVISION AND THAT I AM A DULY LICENSED PROFESSIONAL ENGINEER UNDER THE LAWS OF THE STATE OF MINNESOTA.

PRINTED NAME: _____
SIGNATURE: _____
DATE: _____ LICENSE #: _____

-	-	-	-	-	-
-	-	-	-	-	-
-	-	-	-	-	-
-	-	-	-	-	-
-	-	-	-	-	-
A	EPF	JCO	JCO	06/20/2025	ISSUED FOR REVIEW
#	BY	CHK	APP	DATE	RELEASE/REVISION DESCRIPTION



BARR

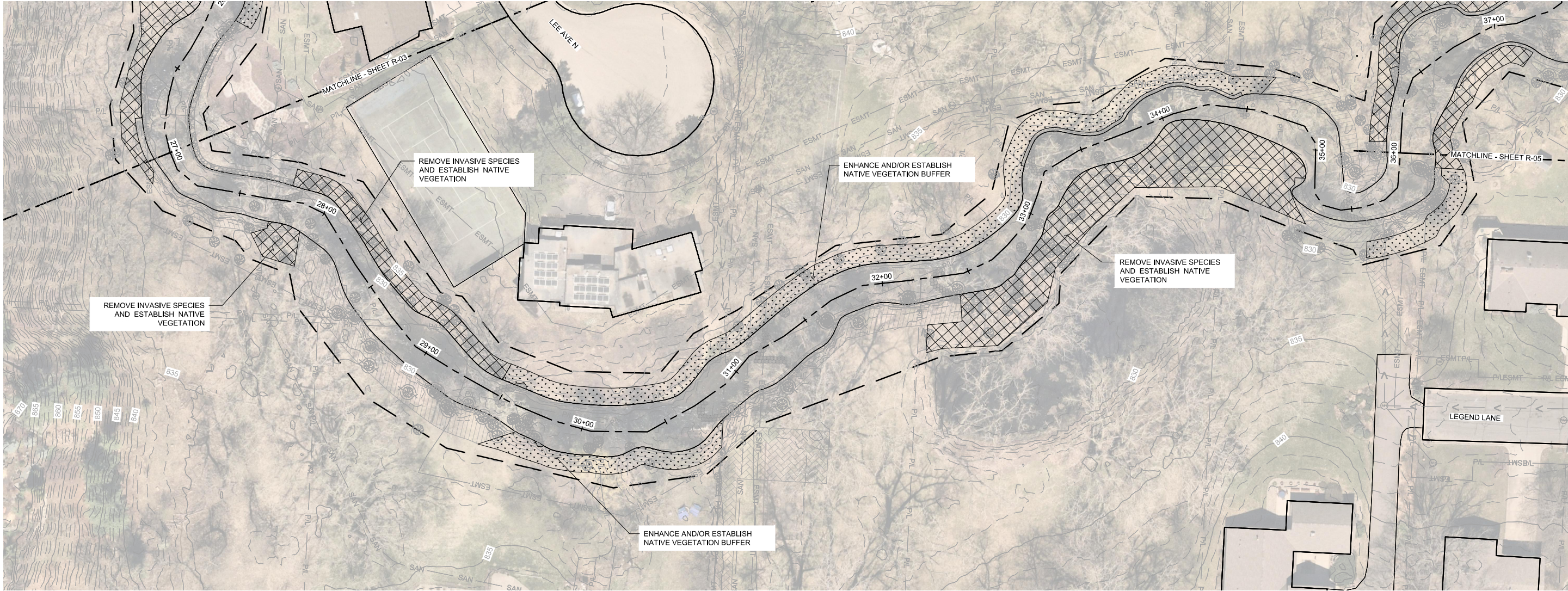
BARR ENGINEERING CO.
4300 MARKETPOINTE DRIVE
SUITE 200
MINNEAPOLIS, MN 55435

PH: 1-800-632-2277
WWW.BARR.COM
MINNESOTA ENGINEERING FIRM
NUMBER 10104111545

BASSETT CREEK WATERSHED MANAGEMENT COMMISSION
GOLDEN VALLEY, MINNESOTA

BASSETT CREEK MAIN STEM RESTORATION - PHASE 2
GOLDEN VALLEY, MINNESOTA
VEGETATION RESTORATION PLAN
(STA. 18+00 TO 27+00)

BARR PROJECT #	23272114.00
DWG #	R-03
REV #	A



50% DESIGN
ISSUED FOR REVIEW
NOT FOR CONSTRUCTION

I HEREBY CERTIFY THAT THIS PLAN, SPECIFICATION, OR REPORT WAS PREPARED BY ME OR UNDER MY DIRECT SUPERVISION AND THAT I AM A DULY LICENSED PROFESSIONAL ENGINEER UNDER THE LAWS OF THE STATE OF MINNESOTA.

PRINTED NAME _____

SIGNATURE _____

DATE _____ LICENSE # _____

-	-	-	-	-	-
-	-	-	-	-	-
-	-	-	-	-	-
-	-	-	-	-	-
-	-	-	-	-	-
A	EPF	JCO	JCO	06/20/2025	ISSUED FOR REVIEW
#	BY	CHK	APP	DATE	RELEASE/REVISION DESCRIPTION

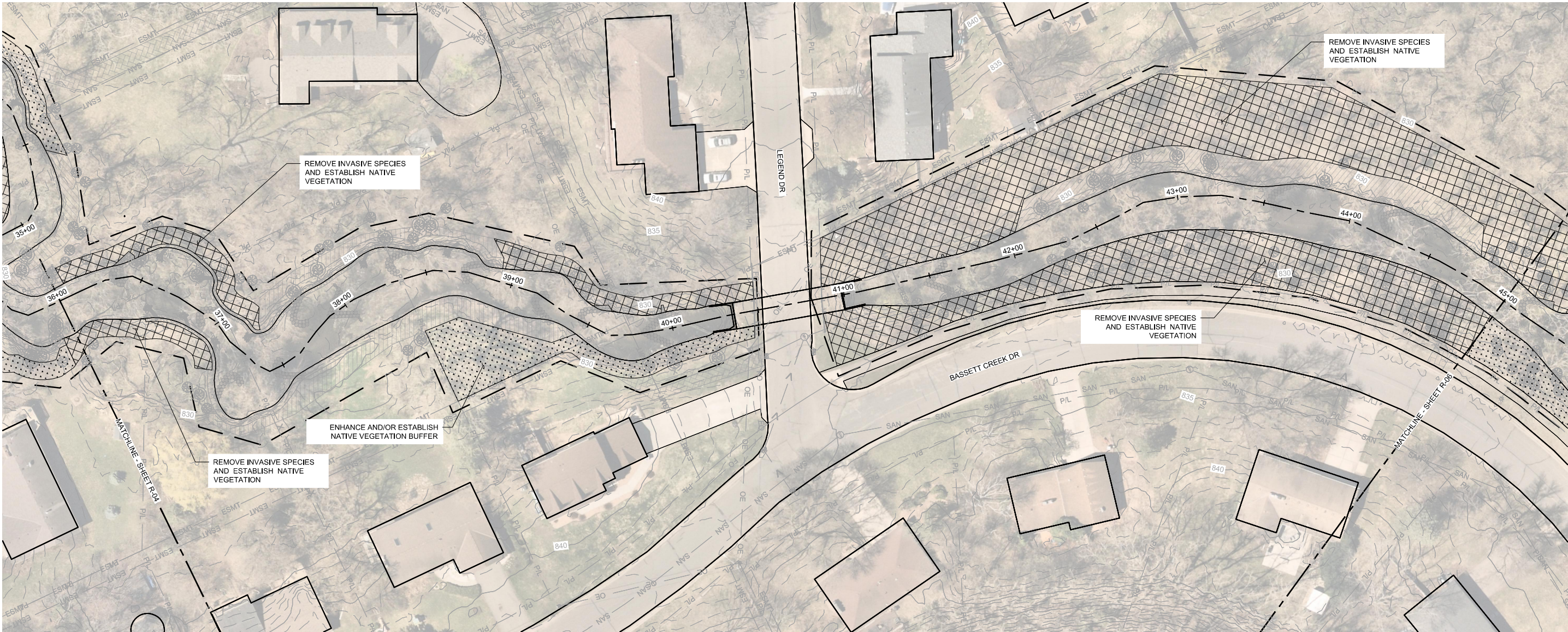
BARR ENGINEERING CO.
4300 MARKETPOINTE DRIVE
SUITE 200
MINNEAPOLIS, MN 55435

PH: 1-800-632-2277
WWW.BARR.COM
MINNESOTA ENGINEERING FIRM
NUMBER 10104111545

BASSETT CREEK WATERSHED MANAGEMENT COMMISSION
GOLDEN VALLEY, MINNESOTA

BASSETT CREEK MAIN STEM RESTORATION - PHASE 2
GOLDEN VALLEY, MINNESOTA
VEGETATION RESTORATION PLAN
(STA. 27+00 TO 36+00)

BARR PROJECT #	23272114.00
DWG #	R-04
REV #	A



1 PLAN: BASSETT CREEK VEGETATION RESTORATION (STA. 36+00 TO 45+00)

0 30 60
SCALE IN FEET

50% DESIGN
ISSUED FOR REVIEW
NOT FOR CONSTRUCTION

I HEREBY CERTIFY THAT THIS PLAN, SPECIFICATION, OR REPORT WAS PREPARED BY ME OR UNDER MY DIRECT SUPERVISION AND THAT I AM A DULY LICENSED PROFESSIONAL ENGINEER UNDER THE LAWS OF THE STATE OF MINNESOTA.

PRINTED NAME: _____
SIGNATURE: _____
DATE: _____ LICENSE #: _____

-	-	-	-	-	-	
-	-	-	-	-	-	
-	-	-	-	-	-	
-	-	-	-	-	-	
A	EPF	JCO	JCO	06/20/2025	ISSUED FOR REVIEW	
#	BY	CHK	APP	DATE	RELEASE/REVISION DESCRIPTION	



BARR

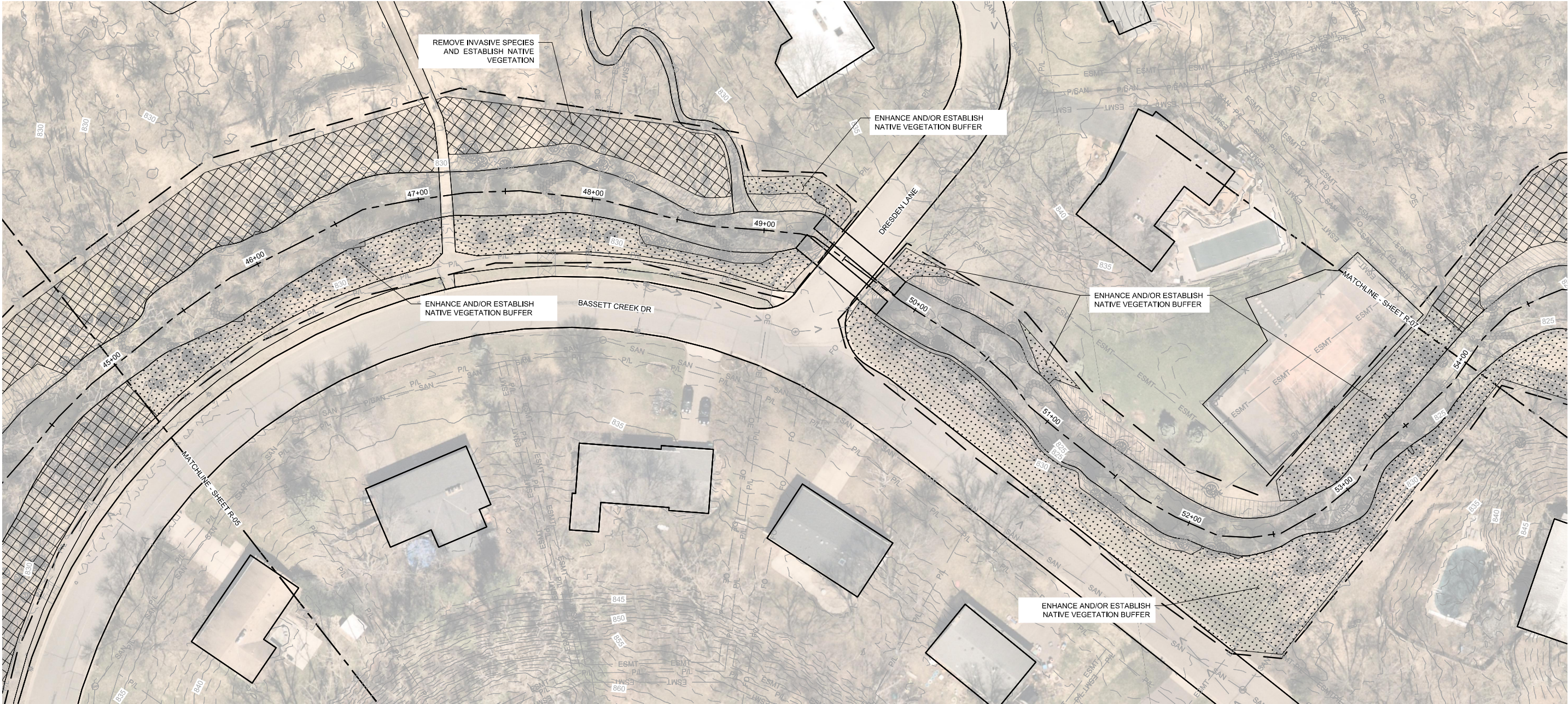
BARR ENGINEERING CO.
4300 MARKETPOINTE DRIVE
SUITE 200
MINNEAPOLIS, MN 55435

PH: 1-800-632-2277
WWW.BARR.COM
MINNESOTA ENGINEERING FIRM
NUMBER 10104111545

BASSETT CREEK WATERSHED MANAGEMENT COMMISSION
GOLDEN VALLEY, MINNESOTA

BASSETT CREEK MAIN STEM RESTORATION - PHASE 2
GOLDEN VALLEY, MINNESOTA
VEGETATION RESTORATION PLAN
(STA. 36+00 TO 45+00)

BARR PROJECT #	23272114.00
DWG #	R-05
REV #	A



1 PLAN: BASSETT CREEK VEGETATION RESTORATION (STA. 45+00 TO 54+00)

0 30 60
SCALE IN FEET

N

50% DESIGN
ISSUED FOR REVIEW
NOT FOR CONSTRUCTION

I HEREBY CERTIFY THAT THIS PLAN, SPECIFICATION, OR REPORT WAS PREPARED BY ME OR UNDER MY DIRECT SUPERVISION AND THAT I AM A DULY LICENSED PROFESSIONAL ENGINEER UNDER THE LAWS OF THE STATE OF MINNESOTA.

PRINTED NAME: _____

SIGNATURE: _____

DATE: _____ LICENSE #: _____

-	-	-	-	-	-
-	-	-	-	-	-
-	-	-	-	-	-
-	-	-	-	-	-
-	-	-	-	-	-
A	EPF	JCO	JCO	06/20/2025	ISSUED FOR REVIEW
#	BY	CHK	APP	DATE	RELEASE/REVISION DESCRIPTION



BARR

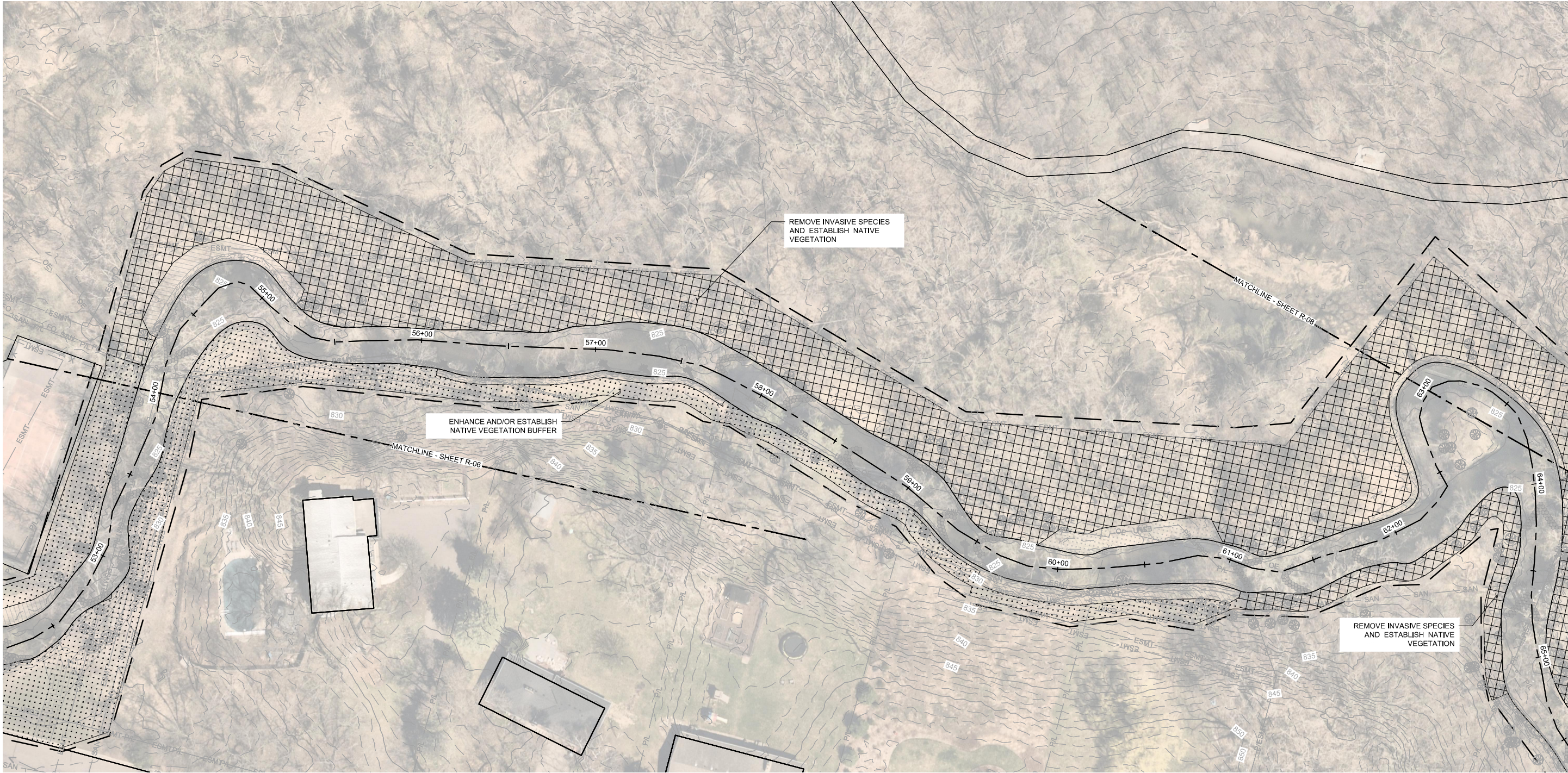
BARR ENGINEERING CO.
4300 MARKETPOINTE DRIVE
SUITE 200
MINNEAPOLIS, MN 55435

PH: 1-800-632-2277
WWW.BARR.COM
MINNESOTA ENGINEERING FIRM
NUMBER 10104111545

BASSETT CREEK WATERSHED MANAGEMENT COMMISSION
GOLDEN VALLEY, MINNESOTA

BASSETT CREEK MAIN STEM RESTORATION - PHASE 2
GOLDEN VALLEY, MINNESOTA
VEGETATION RESTORATION PLAN
(STA. 45+00 TO 54+00)

BARR PROJECT #	23272114.00
DWG #	R-06
REV #	A



1 PLAN: BASSETT CREEK VEGETATION RESTORATION (STA. 54+00 TO 63+00)

0 30 60
SCALE IN FEET

50% DESIGN
ISSUED FOR REVIEW
NOT FOR CONSTRUCTION

I HEREBY CERTIFY THAT THIS PLAN, SPECIFICATION, OR REPORT WAS PREPARED BY ME OR UNDER MY DIRECT SUPERVISION AND THAT I AM A DULY LICENSED PROFESSIONAL ENGINEER UNDER THE LAWS OF THE STATE OF MINNESOTA.

PRINTED NAME _____
SIGNATURE _____
DATE _____ LICENSE # _____

-	-	-	-	-	-	
-	-	-	-	-	-	
-	-	-	-	-	-	
-	-	-	-	-	-	
-	-	-	-	-	-	
A	EPF	JCO	JCO	06/20/2025	ISSUED FOR REVIEW	
#	BY	CHK	APP	DATE	RELEASE/REVISION DESCRIPTION	

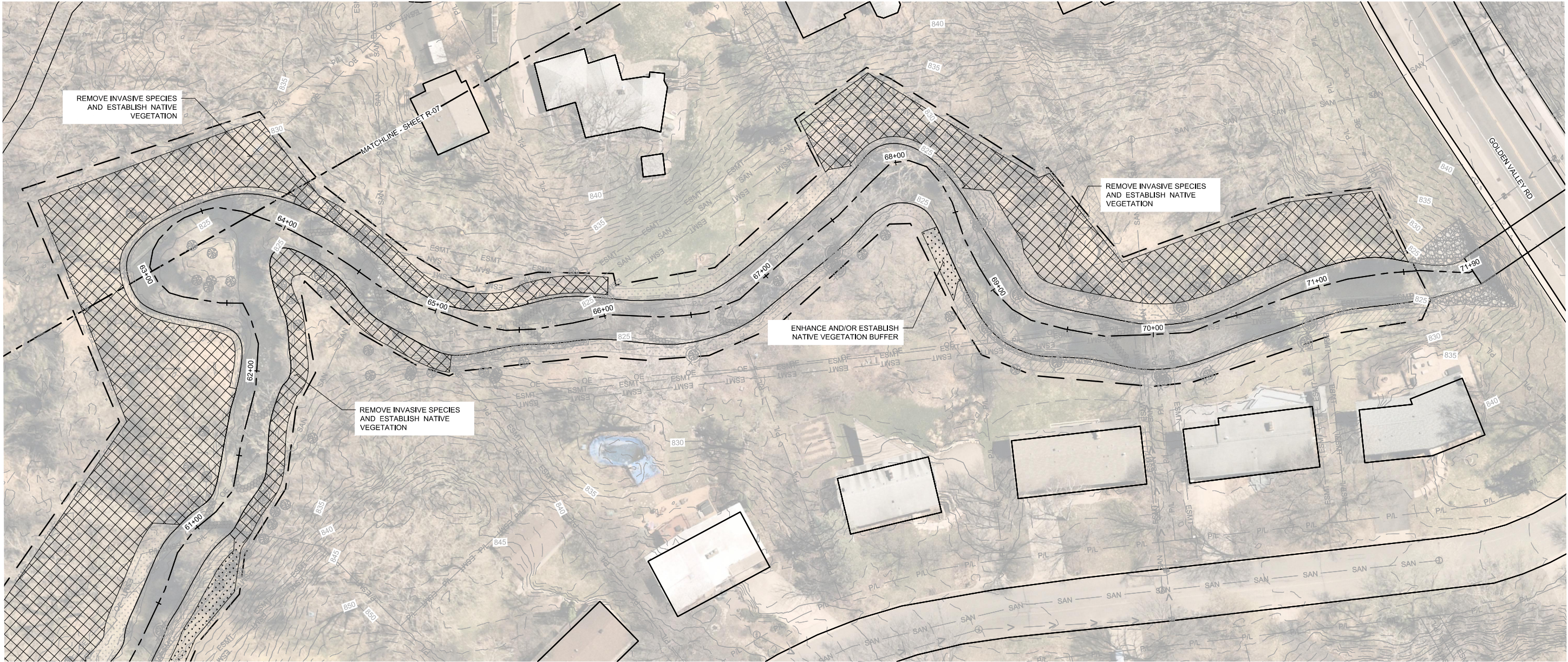
BARR[®]

BARR ENGINEERING CO.
4300 MARKETPOINTE DRIVE
SUITE 200
MINNEAPOLIS, MN 55435PH: 1-800-632-2277
WWW.BARR.COM
MINNESOTA ENGINEERING FIRM
NUMBER 10104111545

BASSETT CREEK WATERSHED MANAGEMENT COMMISSION
GOLDEN VALLEY, MINNESOTA

BASSETT CREEK MAIN STEM RESTORATION - PHASE 2
GOLDEN VALLEY, MINNESOTA
VEGETATION RESTORATION PLAN
(STA. 54+00 TO 63+00)

BARR PROJECT #	23272114.00
DWG #	R-07
REV #	A



1 PLAN: BASSETT CREEK VEGETATION RESTORATION (STA. 63+00 TO 72+00)

0 30 60
SCALE IN FEET

North Arrow pointing up

50% DESIGN
ISSUED FOR REVIEW
NOT FOR CONSTRUCTION

I HEREBY CERTIFY THAT THIS PLAN, SPECIFICATION, OR REPORT WAS PREPARED BY ME OR UNDER MY DIRECT SUPERVISION AND THAT I AM A DULY LICENSED PROFESSIONAL ENGINEER UNDER THE LAWS OF THE STATE OF MINNESOTA.

PRINTED NAME _____

SIGNATURE _____

DATE _____ LICENSE # _____

-	-	-	-	-	-
-	-	-	-	-	-
-	-	-	-	-	-
-	-	-	-	-	-
-	-	-	-	-	-
A	EPF	JCO	JCO	06/20/2025	ISSUED FOR REVIEW
#	BY	CHK	APP	DATE	RELEASE/REVISION DESCRIPTION



BARR

BARR ENGINEERING CO.
4300 MARKETPOINTE DRIVE
SUITE 200
MINNEAPOLIS, MN 55435

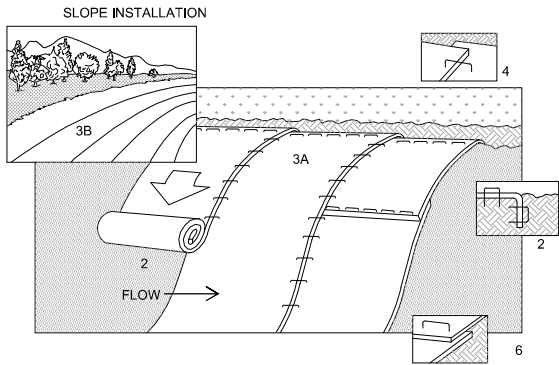
PH: 1-800-632-2277
WWW.BARR.COM
MINNESOTA ENGINEERING FIRM
NUMBER 10104111545

BASSETT CREEK WATERSHED MANAGEMENT COMMISSION
GOLDEN VALLEY, MINNESOTA

BASSETT CREEK MAIN STEM RESTORATION - PHASE 2
GOLDEN VALLEY, MINNESOTA
VEGETATION RESTORATION PLAN
(STA. 63+00 TO 72+00)

BARR PROJECT #	23272114.00
DWG #	R-08
REV #	A

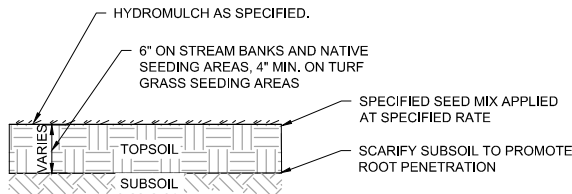
ORIGINAL DRAWING SIZE: ANSI FULL BLEED B (11.00 X 17.00 INCHES) PLOT SCALE: 1:2 PLOT DATE: 7/8/2025 12:33 PM
CADD USER: DILLON R. MARTIN FILE: MIDDESIGN23272114_0023272114_R-09.DWG



NOTES:

- REFER TO MANUFACTURER RECOMMENDATIONS FOR STAPLE PATTERNS FOR SLOPE INSTALLATIONS.
- PREPARE SOIL BY LOOSENING TOP 1-2 INCHES AND APPLY SEED (AND FERTILIZER WHERE REQUIRED) PRIOR TO INSTALLING BLANKETS. GROUND SHOULD BE SMOOTH AND FREE OF DEBRIS.
- BEGIN (A) AT THE TOP OF THE SLOPE AND ROLL THE BLANKETS DOWN OR (B) AT ONE END OF THE SLOPE AND ROLL THE BLANKETS HORIZONTALLY ACROSS THE SLOPE.
- THE EDGES OF PARALLEL BLANKETS MUST BE STAPLED WITH APPROXIMATELY 6" OVERLAP, WITH THE UPHILL BLANKET ON TOP.
- WHEN BLANKETS MUST BE SPICED DOWN THE SLOPE, PLACE BLANKETS END OVER END (SHINGLE STYLE) WITH APPROXIMATELY 6" OVERLAP. STAPLE THROUGH OVERLAPPED AREA, APPROXIMATELY 12" APART.
- BLANKET MATERIALS SHALL BE AS SPECIFIED OR AS APPROVED BY ENGINEER.

1 - NOT TO SCALE
DETAIL: EROSION CONTROL BLANKET INSTALLATION



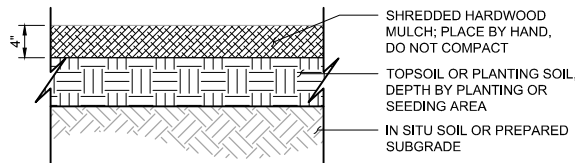
NOTE:

- WHERE REQUIRED, PLANT SHRUBS, TREES, AND HERBACEOUS PLUGS ACCORDING TO PLAN.
- INSTALL EROSION CONTROL BLANKET ON ALL SLOPES GREATER THAN 3:1.

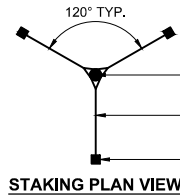
5 - NOT TO SCALE
DETAIL: TOPSOIL AND SEEDING

NOTE:

- PREPARE SUBGRADE PER PLAN AND AS SPECIFIED.
- PROVIDE MULCH AS SPECIFIED. ENSURE MULCH IS CERTIFIED TO BE WEED SEED FREE AND IS NOT CONTAMINATED WITH SOILS OR PESTS.
- MULCH CONTAMINATED WITH SOIL MUST BE REMOVED AND REPLACED.



6 - NOT TO SCALE
DETAIL: HARDWOOD MULCH



ENSURE TRUNK IS PLUMB AFTER STAKING AND GUYING

GUYING SYSTEM, TYP. (SEE NOTE 11)

(3) ANCHOR STAKES, DRIVE AT LEAST 24" INTO THE GROUND AND 12" MIN. INTO THE SUBGRADE

FINISHED GRADE

DEPTH

SEE PLANTING HOLE DIMS TABLE

24" MIN.

12" MIN.

WIDTH

SEE PLANTING HOLE DIMS TABLE

16" MIN.

ROOT BALL

SIZE VARIES

MULCH, SEE

6

BERM SLIGHTLY TO CREATE 3" WATERING BASIN

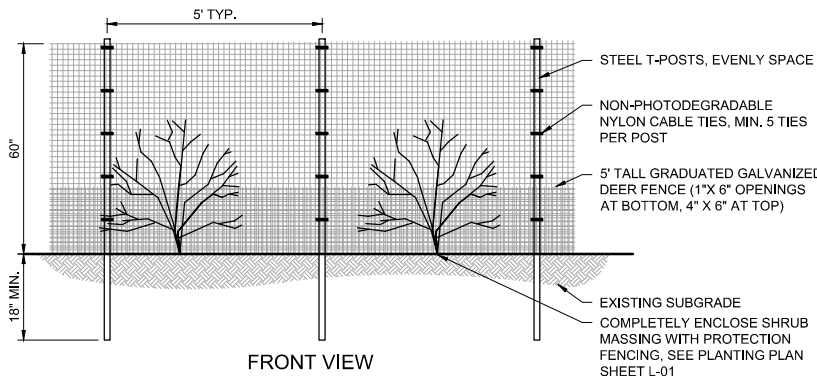
ROOT PACKAGE, SCORE OUTER EDGE OF SURFACE TO LOOSEN AND EXPOSE TERMINAL ROOTS

SCARIFY SIDES AND BOTTOM OF EXCAVATION

BACKFILL PLANTING SOIL

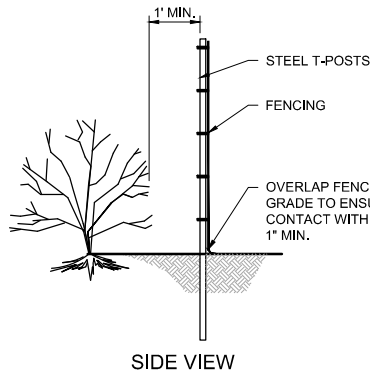
IN SITU SOILS OR PREPARED SUBGRADE

2 - NOT TO SCALE
DETAIL: DECIDUOUS TREE PLANTING



FRONT VIEW

7 - NOT TO SCALE
DETAIL: SHRUB PROTECTION FENCE



SIDE VIEW

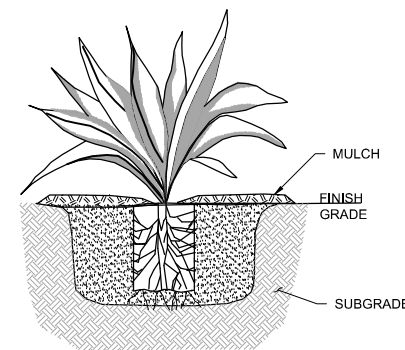
NOTES:

- EXCAVATE SOIL AS REQUIRED. REFER TO TREE PLANTING HOLE DIMENSION REFERENCE TABLE. PLANTING HOLE DEPTH SHOULD NOT EXCEED MEASUREMENT FROM ROOT FLARE TO BOTTOM OF ROOT PACKAGE.
- SCARIFY BOTTOM AND SIDES OF HOLE PRIOR TO PLANTING.
- PREPARE PLANTING SOIL AS SPECIFIED. SOIL MUST BE PRE-MIXED OR MIXED TO A UNIFORM TEXTURE ON SITE PRIOR TO PLACEMENT.
- REMOVE AND DISPOSE OF THE ROOT PACKAGING MATERIAL AS NOTED AND PERFORM ANY CORRECTIVE PRUNING OF TOP AND ROOTS AS SPECIFIED TO PREPARE THE TREE FOR PLANTING.
- DO NOT CUT OR DAMAGE THE CENTRAL LEADER.
- SET TREE ON IN SITU SOIL OR THOROUGHLY-COMPACTED BACKFILL AND PLUMB.
- BACKFILL AROUND PREPARED ROOT PACKAGE WITH PLANTING SOIL WITH 6" MAX. LIFTS. GENTLY FIRM SOIL AROUND THE ROOT MASS WITH EACH LIFT TO MAINTAIN PLUMB.
- ENSURE THE STAKING SYSTEM DOES NOT DIRECTLY ANCHOR TO OR PENETRATE THE ROOT BALL UPON INSTALLATION.
- WATER THOROUGHLY WITHIN 2 HOURS AFTER PLANTING TO FILL VOIDS; BACKFILL ANY VOIDS CREATED DURING INITIAL WATERING AND RE-WATER.
- APPLY MULCH OVER SOIL SURFACE AT THE BASE OF THE TREE IMMEDIATELY AFTER PLANTING. ENSURE NO MULCH IS IN CONTACT WITH THE BASE OF TREE AT FINISHED GRADE.
- GUYING SYSTEM, AS SPECIFIED. ATTACH GUYING SYSTEM TO TRUNK AND POST AND RE-CHECK PLUMB.
- MAINTAIN TREE IN A PLUMB POSITION THROUGHOUT THE INITIAL ESTABLISHMENT PERIOD.
- REMOVE THE TREE STAKING SYSTEM AFTER THE INITIAL ESTABLISHMENT PERIOD, AS SPECIFIED.

HERBACEOUS PLUG PLANTING NOTES:

- PREPARE SOIL WITH COMPOST AMENDMENT PER PLAN
- PROVIDE AND INSTALL PLANTS PER SCHEDULE.
- EXCAVATE HOLE 3 TIMES WIDTH OF ROOTBALL.
- BREAK BOTTOM OF ROOTBALL TO LOOSEN ROOTS.
- PLANT THROUGH MULCH ALIGNING ROOTBALL TOP EVEN WITH SOIL - DO NOT PLANT TOO DEEP OR TOO SHALLOW. FIRM SOIL TO ENSURE GOOD CONTACT WITH ROOTS.
- APPLY 3" DEPTH SHREDDED HARDWOOD MULCH TO ENTIRE PLANTING AREA (SOIL PREPARED AS PER SPECIFICATIONS).
- NO MULCH TO BE IN CONTACT WITH PLANT.
- WATER THOROUGHLY AFTER PLANTING.
- CONTRACTOR TO WATER AS NECESSARY TO MAINTAIN IN A HEALTHY CONDITION. AT THE END OF THIS PERIOD ANY DEAD PLANTS SHALL BE REPLACED AT CONTRACTOR'S EXPENSE.

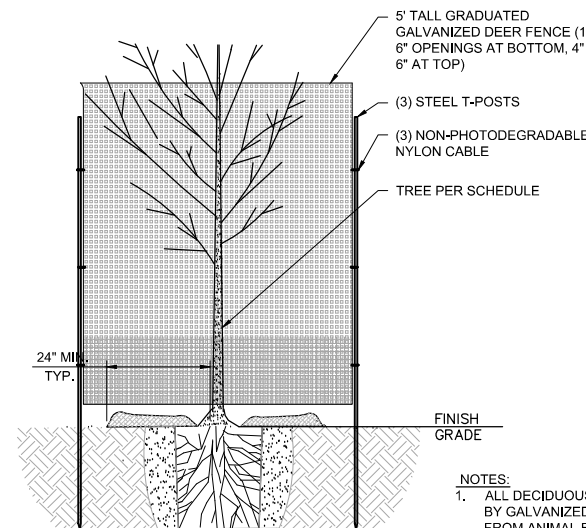
3 - NOT TO SCALE
DETAIL: HERBACEOUS PLUG



SHRUB PLANTING NOTES:

- PROVIDE AND INSTALL PLANTS PER SCHEDULE.
- REMOVE DEAD OR DAMAGED BRANCHES. RETAIN THE NATURAL FORM OF PLANT.
- IF ROOT FLARE IS NOT EXPOSED WITHIN THE CONTAINER EXCAVATE SURFACE SOIL TO BASE OF ROOT FLARE.
- DIG PLANT HOLES 6" MIN. LARGER THAN ROOT MASS. ALL SIDES.
- SET SHRUB ON LIGHTLY FIRMED BACKFILL SOIL SO ROOT FLARE IS EVEN WITH FINISH GRADE.
- PLACE SHREDDED HARDWOOD MULCH (MN/DOT SPEC 3882.2 TYPE 6 - WEED SEED FREE SHREDDED HARDWOOD,) TO A RADIUS OF 24" AND TO A DEPTH OF 3" AROUND PLANT.
- NO MULCH TO BE IN CONTACT WITH PLANT.

5 - NOT TO SCALE
DETAIL: SHRUB AND VINE PLANTING



NOTES:

- ALL DECIDUOUS TREES SHALL BE ENCLOSED BY GALVANIZED DEER FENCING TO PROTECT FROM ANIMAL BROWSING. TREE PROTECTION SHALL BE CONSIDERED INCIDENTAL TO TREE PLANTING

3 - NOT TO SCALE
DETAIL: TREE PROTECTION FENCE

50% DESIGN
ISSUED FOR REVIEW
NOT FOR CONSTRUCTION

I HEREBY CERTIFY THAT THIS PLAN, SPECIFICATION, OR REPORT WAS PREPARED BY ME OR UNDER MY DIRECT SUPERVISION AND THAT I AM A DULY LICENSED PROFESSIONAL ENGINEER UNDER THE LAWS OF THE STATE OF MINNESOTA.

PRINTED NAME: _____
SIGNATURE: _____
DATE: _____ LICENSE #: _____

-	-	-	-	-	-
-	-	-	-	-	-
-	-	-	-	-	-
-	-	-	-	-	-
-	-	-	-	-	-
A	EPF	JCO	JCO	06/20/2025	ISSUED FOR REVIEW
#	BY	CHK	APP	DATE	RELEASE/REVISION DESCRIPTION

BARR
BARR ENGINEERING CO.
4300 MARKETPOINTE DRIVE
SUITE 200
MINNEAPOLIS, MN 55435
PH: 1-800-632-2277
WWW.BARR.COM
MINNESOTA ENGINEERING FIRM
NUMBER 1010411545

BASSETT CREEK WATERSHED MANAGEMENT COMMISSION
GOLDEN VALLEY, MINNESOTA

BASSETT CREEK MAIN STEM RESTORATION - PHASE 2
GOLDEN VALLEY, MINNESOTA
RESTORATION DETAILS

BARR PROJECT #	23272114.00
DWG #	R-09
REV #	A